



New Applicant Information Sheet

Contents

The Yellow-eyed Penguin Trust	2
Mission	2
Vision Statements	2
Yellow-eyed penguins / hoiho / <i>Megadyptes antipodes</i>	3
Monitoring	3
References	3
Employment at the Trust	4
About the Team	4
Structure	4
Location.....	4
Current Vacancy Information.....	5
Contact Details.....	5

The Yellow-eyed Penguin Trust

The Yellow-eyed Penguin Trust (YEPT) / Te Tautiaki Hoiho is a leading authority on yellow-eyed penguins / hoiho, and their conservation. We are New Zealand's first single-species conservation Trust.

As a registered charity, we rely on public funding and support from our members and the public in general. Therefore, promotion of YEPT, its role, its work, and successes, is key to its ongoing effectiveness as an organisation with a strong public support and financial base.

YEPT is a key programme partner on the Hoiho Governance Group (HGG) with the Department of Conservation Te Papa Atawhai, Te Rūnanga o Ngāi Tahu and Fisheries NZ Tini a Tangaroa. In 2020 HGG released a new strategy for hoiho recovery (Te Kaweka Takohaka mō te Hoiho) and an accompanying 5-year action plan (Te Mahere Rima Tau). The strategy aims to support the ecological and cultural health of hoiho across the marine and terrestrial ecosystems, and YEPT's work programme is guided by these documents.

Mission

"To work towards an increase in the number of yellow-eyed penguins on a self-sustaining basis within their natural coastal ecosystem".

Key mission statements:

- 1. Conservation:** The Trust will work to protect and increase the number of hoiho / yellow-eyed penguins and other coastal flora and fauna in both the marine and terrestrial environments.
- 2. Professionalism:** In every case the Trust will conduct its business in a professional manner, establishing and maintaining good relations with associated organisations and individuals.
- 3. Financial:** The Trust will practice prudent financial management and aim to maintain cash reserves sufficient to finance six months operational expenses.

Vision Statements

- 1.** YEPT will always support the conservation of hoiho in both its terrestrial and marine habitats.
- 2.** YEPT will be demonstrably influential in promoting effective coastal conservation management in both the terrestrial and marine environment.
- 3.** YEPT will be recognised as a good employer providing professional development pathways for staff.
- 4.** YEPT will be able to demonstrate that its habitats are managed according to best-evidence principles.
- 5.** YEPT will be an exemplary ENGO collaboratively obtaining optimum conservation outcomes based on a combination of good science and best-practice management.

Yellow-eyed penguins / hoiho / *Megadyptes antipodes*

Hoiho are unique to New Zealand, their natural range extends from Banks Peninsula to the subantarctic Auckland and Campbell Islands. The International Union for the Conservation of Nature and Natural Resources (IUCN) ranks the birds as *endangered* owing to their restricted range, extinction pressures in their marine and terrestrial environments, and their extreme fluctuations in numbers. Since 2008 their population on the mainland and Rakiura has declined by ~70%.

There are two distinct populations: the northern population breed on mainland New Zealand / Aotearoa, Stewart Island / Rakiura and outliers, and the southern population breed on the sub-Antarctic Auckland Islands / Motu Maha and Campbell Island / Motu Ihupuku.

Hoiho are a taoka species listed in the Ngāi Tahu Claims Settlement Act 1998.

Monitoring

The Trust monitors hoiho throughout their breeding season and moulting period, October – May. YEPT also developed the first rehabilitation facility on Rakiura specifically for underweight or sick hoiho. It is hoped in time this will extend to caring for chicks too.



References

Other key information can be found:

Website <https://www.yellow-eyedpenguin.org.nz/penguins>

Facebook <https://www.facebook.com/yeptrust>

Instagram <https://www.instagram.com/yelloweyedpenguintrust/>

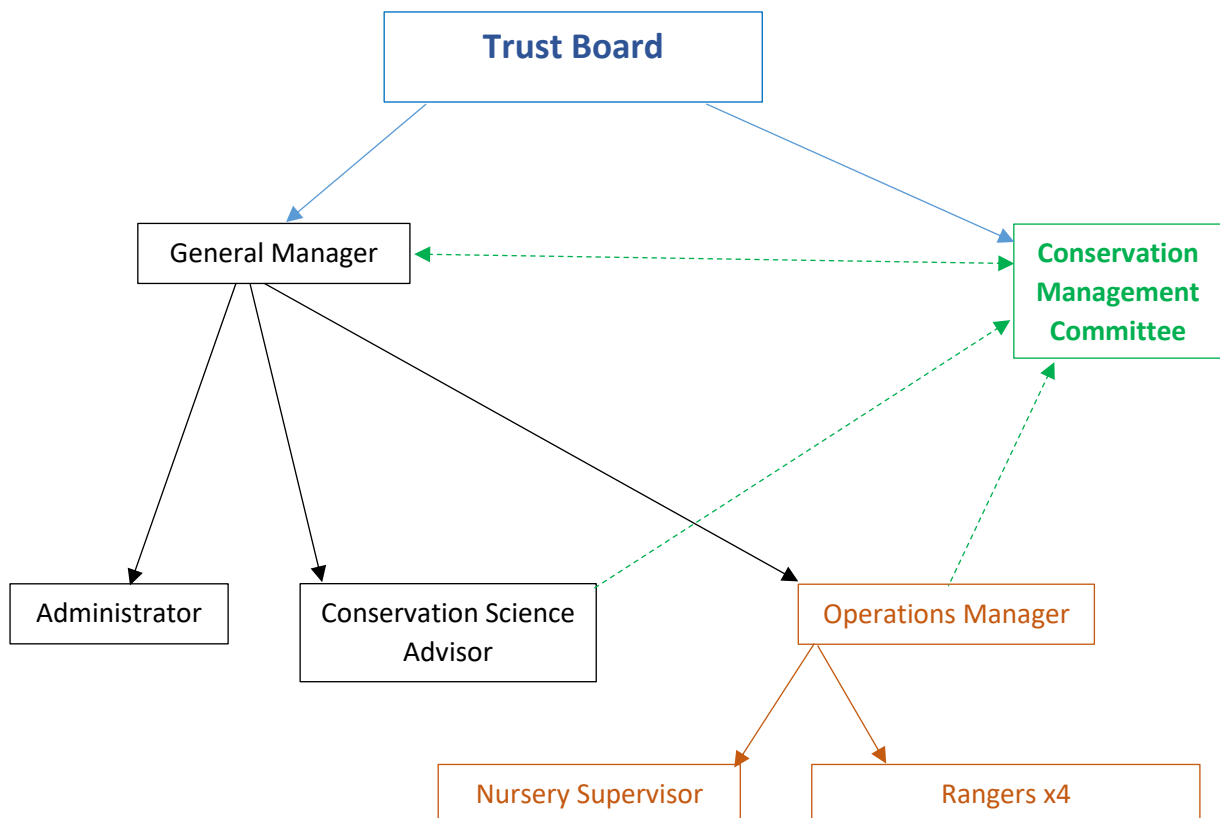
Employment at the Trust

About the Team

The Trust is governed by a Trust Board with the capacity of up to 15 volunteer trustees. It has one sub-committee, the Conservation Management Committee, which oversees all the field operations.

The staff team is managed by the General Manager as representative of the Trust Board. There are weekly staff meetings each Tuesday providing an opportunity to discuss work plans and catch-up on what is generally happening for each staff person and the Trust in general.

Structure



Location

The Trust's work covers the geographic range of the yellow-eyed penguin which is from Banks Peninsula south along the eastern coast of the South Island, Stewart Island / Rakiura (including Codfish Island / Whenua Hou) and the sub-Antarctic Auckland / Motu Maha and Campbell Islands / Motu Ihupuku.

The Trust's office is based in John Wickliffe House in Central Dunedin, the plant nursery is based at Company Bay on the Otago Peninsula, and a field base at Long Point / Irahuka (Catlins).

The Trust also owns reserves in North Otago and on the Otago Peninsula.

Current Vacancy Information

Current Vacancy: General Manager	
Contract	Full time (40 hours per week), some flexibility in working hours may be available.
Closing Date	Applications will be accepted up to 12noon on Friday 31 March 2023
About the Role	Please see the attached Position Description for details
Location	Based from the Yellow-eyed Penguin Trust Office, Level 1, John Wickliffe House, 265 Princes Street, Dunedin 9016. Travel may be required from time-to-time and with prior agreement.
More Information	Additional information can be found on the Trust's website.
How to apply	Please complete and submit the following: <ol style="list-style-type: none">1. Completed Application form2. CV detailing your competence for this position3. Covering letter
Conditions to applicants	Please do NOT apply unless you have a right to work in New Zealand for the duration of the contract of employment. The Trust is an equal opportunities employer. Please note, smoking or taking any illicit drug or substance is not permitted at any time while working for the Trust, including any overnight stays.
Pre-Employment Background Checks	Should you be shortlisted for this position, your referees may be asked to comment on your suitability for a position with the Trust. We would seek your permission prior to any contact. The Trust retains the right to carry out random drug testing and may request the applicant to provide any criminal conviction history and undergo police vetting.
Send applications	Please address and email applications to Sue Murray, General Manager generalmanager@yeptrust.org.nz

Contact Details

General Manager

generalmanager@yeptrust.org.nz

Phone

021 488285