



## New Applicant Information Sheet

### Mission

“To work towards an increase in the number of yellow-eyed penguins on a self-sustaining basis within their natural coastal ecosystem”.

### Key mission statements:

- 1. Conservation:** The Trust will work to protect and increase the number of yellow-eyed penguins and other coastal flora and fauna in both the marine and terrestrial environments.
- 2. Professionalism:** In every case the Trust will conduct its business in a professional manner, establishing and maintaining good relations with associated organisations and individuals.
- 3. Financial:** The Trust will practise prudent financial management and aim to maintain cash reserves sufficient to finance six months operational expenses.

### Vision Statements

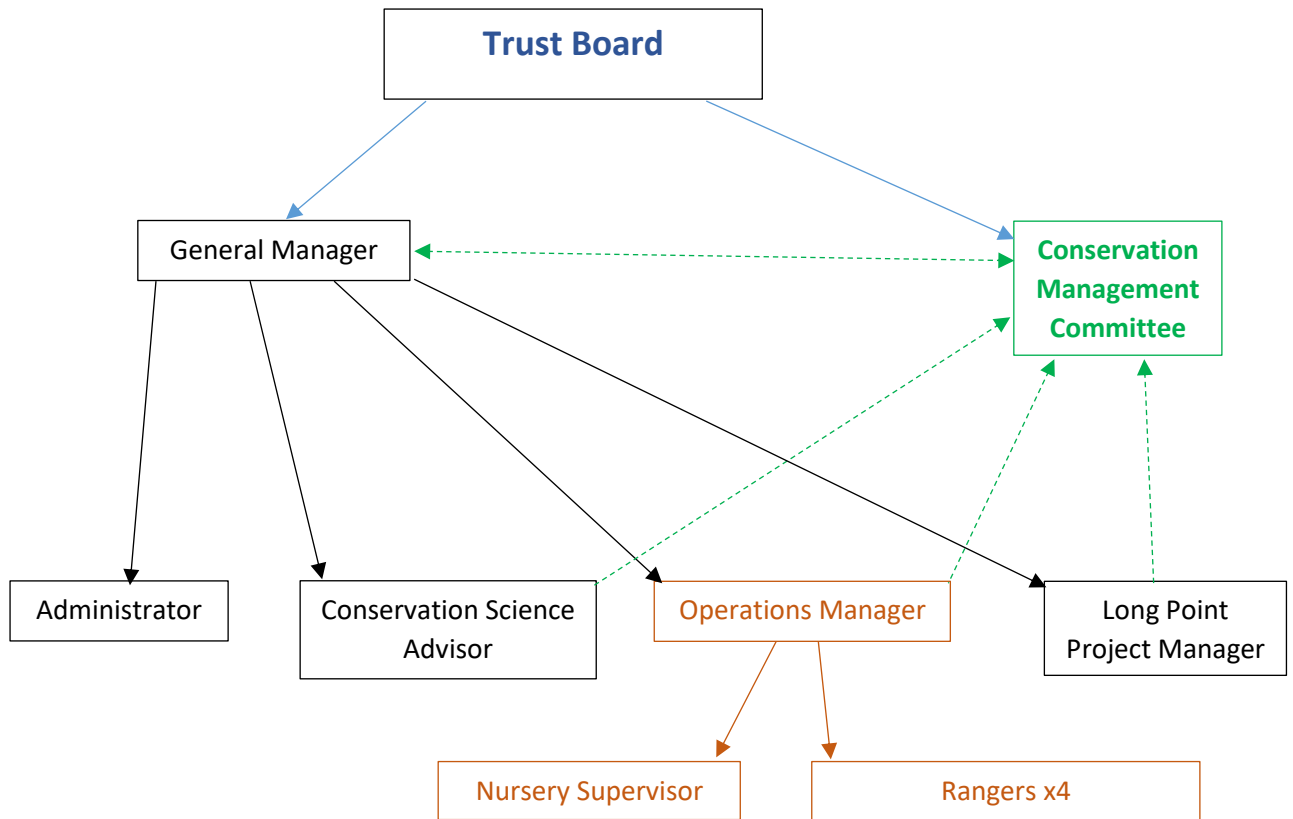
1. YEPT will be demonstrably influential in promoting effective coastal conservation management in both the terrestrial and marine environment.
2. YEPT will be a good employer providing professional development pathways for staff.
3. YEPT will be able to demonstrate that its habitats are managed according to best-evidence principles.
4. YEPT will be an exemplary ENGO collaboratively obtaining optimum conservation outcomes based on a combination of good science and best-practice management.

### Yellow-eyed penguins / hoiho / *Megadyptes antipodes*

Hoiho are unique to New Zealand, their natural range extends from Banks Peninsula to the subantarctic Auckland and Campbell Islands. The International Union for the Conservation of Nature and Natural Resources (IUCN) ranks the birds as *endangered* owing to their restricted range, extinction pressures in their marine and terrestrial environments, and their extreme fluctuations in numbers.

YEPT is a key programme partner on the Hoiho Governance Group (HGG) with the Department of Conservation, Te Rūnanga o Ngāi Tahu and Fisheries NZ. In 2020 HGG released a new strategy for hoiho recovery (Te Kaweka Takohaka mō te Hoiho) and an accompanying 5-year action plan (Te Mahere Rima Tau).

## Structure



## About the Team

The Trust is governed by a Trust Board with the capacity of up to 15 volunteer trustees, and currently there are 12. It has one sub-committee, the Conservation Management Committee, which oversees all the field operations.

The staff team is managed by the General Manager as representative of the Trust Board. There are weekly staff meetings each Tuesday providing an opportunity to discuss work plans and catch-up on what is generally happening for each staff person and the Trust in general.

## Location

The Trust's work covers the geographic range of the yellow-eyed penguin which is from Banks Peninsula south along the eastern coast of the South Island, Stewart Island and the sub-Antarctic Auckland and Campbell Islands.

The Trust's office is based in John Wickliffe House in Central Dunedin, the plant nursery is based at Company Bay on the Otago Peninsula, and a field base at Long Point / Irahuka (Catlins).

The Trust also owns reserves in North Otago and on the Otago Peninsula.

| <b>Current Vacancy: Ranger</b>          |  |
|---|--|
| <b>Contract</b>                         | One-year fixed term contract for 40 hours per week (full time)   |
| <b>Closing Date</b>                     | Applications will be accepted up to <b>5pm on Monday 14<sup>th</sup> February 2022</b>   |
| <b>About the Role</b>                   | Please see the attached role description for details of the position.  |
| <b>Location</b>                         | Based from the Trust's Nursery at 12 McTaggart Street, Company Bay (Otago Peninsula) or the Yellow-eyed Penguin Trust Office, Level 1, John Wickliffe House, 265 Princes Street, Dunedin 9016.<br>Travel throughout Otago and Southland will be required, and from time-to-time and with prior agreement, you will be expected to stay overnight.                  |
| <b>How to apply</b>                     | Please complete and submit the following: <ol style="list-style-type: none"> <li>1. Application form</li> <li>2. CV detailing your competence for this position as outlined in the detailed role description</li> <li>3. Covering letter</li> </ol>  |
| <b>Conditions to applicants</b>         | Please do NOT apply unless you have a right to work in New Zealand for the duration of the contract of employment.<br><br>The Trust is an equal opportunities employer.<br><br>Please note, smoking or taking any illicit drug or substance is not permitted at any time while working for the Trust, including any overnight stays.                               |
| <b>Pre-Employment Background Checks</b> | Should you be shortlisted for this position, your referees may be asked to comment on your suitability for a position with the Trust. We would seek your permission prior to any contact.<br><br>The Trust retains the right to carry out random drug testing and may request the applicant to provide any criminal conviction history and undergo police vetting. |
| <b>Send applications</b>                | Please address and email applications to Sue Murray, General Manager <a href="mailto:generalmanager@yeptrust.org.nz">generalmanager@yeptrust.org.nz</a>  |